



**RCMRD**

**Regional Centre for Mapping  
of Resources for Development**

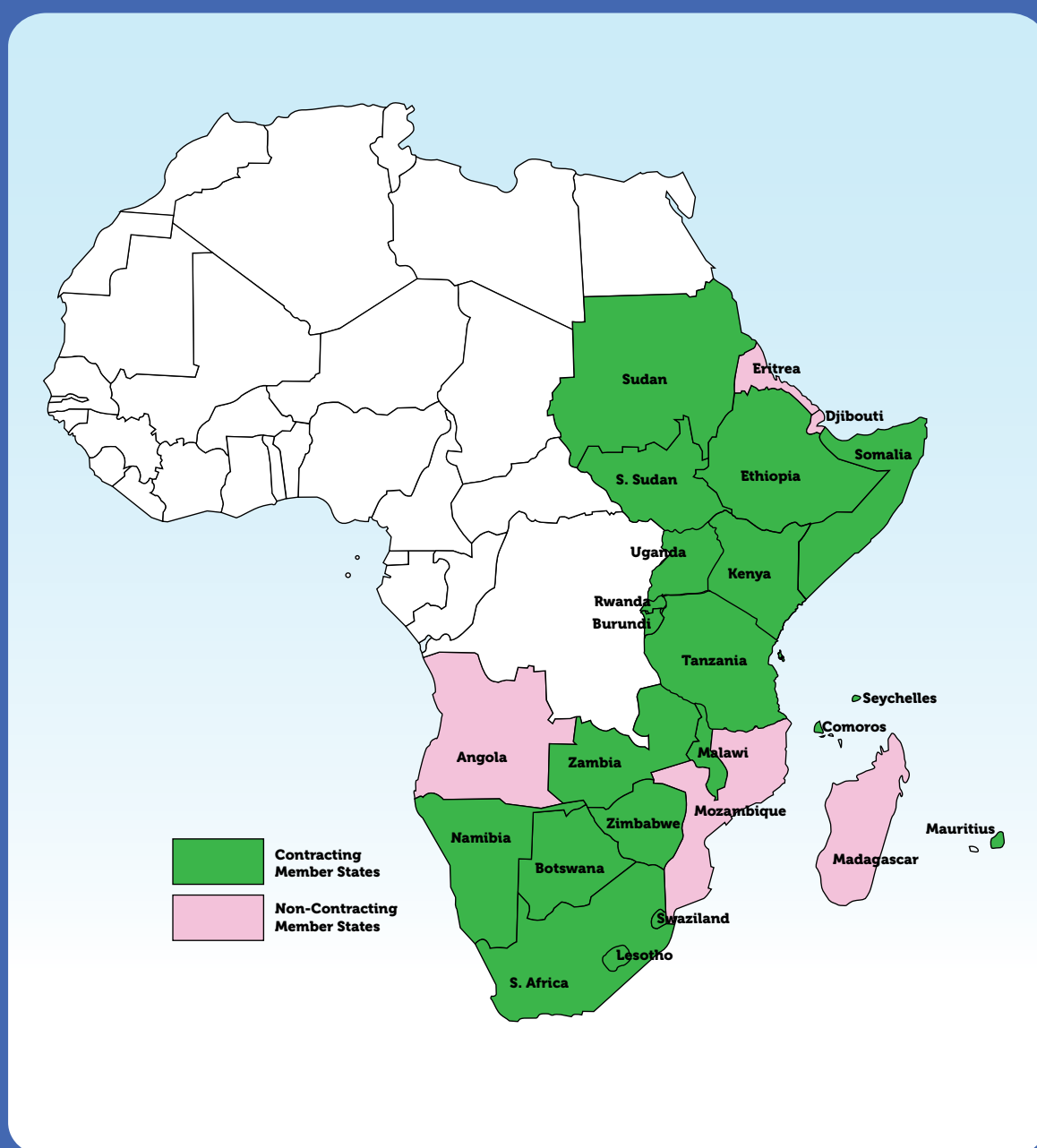
**ANNUAL REPORT  
2015**



## Our Vision

To be a premier Centre of excellence in the provision of geo-information for sustainable development in the member States and beyond.

## Member States



# Table of Contents

FORWARD.....	4
REMOTE SENSING, GIS AND MAPPING DEPARTMENT .....	6
Project Implementation Service .....	6
Training and Workshop Services .....	11
Advisory Services.....	12
Research and Development.....	12
Data Services.....	12
LAND SURVEYS AND MANAGEMENT DEPARTMENT .....	14
Projects Implementation Service .....	14
Training and workshops Programmes.....	14
Advisory Services.....	17
Engineering Section.....	17
IT Training Centre (ITTC) .....	17
MANAGEMENT, ADMINISTRATION AND HUMAN RESOURCE .....	18
49th Governing Council Meeting .....	21
Administration .....	21
Human Resource Management.....	22
Finance Section.....	24
DISTINGUISHED VISITORS TO RCMRD.....	25
Pictorial.....	26
Pictorial.....	27

# FORWARD



**Dr. Hussein Farah**  
Director General

It is with great pleasure that I present the RCMRD 2015 Annual Report. The year 2015 marked the beginning of the implementation of our new Strategic Plan 2015-2018

that was approved by our Conference of Ministers in

November 2014. The Strategic Plan was developed in the context of national, regional and international environments and development initiatives, to position the Centre to proactively respond to the opportunities they present. The new Strategic Plan has outlined the Centre's Vision that requires the Centre and its stakeholders and partners to stretch their future expectations, aspirations and performance is *"To be a premier centre of excellence in the provision of geo-information services to member States and beyond."* The RCMRD Mission statement that expresses its fundamental purpose and business is *"To promote sustainable development in the member States through generation, application and dissemination of geo-information and allied ICT technologies, products and services."*

I am pleased to report that, working closely with member States and our partners we have made significant progress towards fulfilling our mission. This annual report highlights the activities undertaken in 2015 in particular implementation of projects, customer tailored applications of geo-information training and IT courses, research and development and infrastructure and staff development at RCMRD.

In 2015, we expanded and introduced new programmes in our capacity development and advisory services in the member States. Thirty two training programmes

were conducted attracting two thousand seven hundred (2,700) participants from the Member States and other African countries. This is the highest number ever of people trained at the Centre in one year. The new training programmes included Web Mapping Services, establishment of Geo-data Portals, Spatial Data and Knowledge Management, Transparency in Land Administration, Pro-Poor Land Tools and Flood Forecasting using Earth Observation.

In project implementation we carried out twenty five projects. The projects demonstrate novel applications and the increasing role of geo-information in national development. Among the projects implemented included Green House Gas (GHG) emission inventory for Lesotho, Ethiopia and Uganda, Production of Hazards and Vulnerability Atlas for Malawi, Development of Geospatial Data Portals for Swaziland, South Sudan, Rwanda and Mauritius and Mangrove Forest and Sea Grass Mapping for Tanzania, Kenya and Mozambique.

In 2015 we serviced over two hundred pieces of survey and mapping instruments for five member States namely Malawi, Swaziland, Botswana, Uganda and Kenya. In the area of research four activities were undertaken, Near-Real-Time Flood Monitoring, Frost Forecasting and Mapping, Crop Productivity Assessment and improvements on modeling of land degradation assessment.

We have undertaken several initiatives to improve the quality of our services. In 2015, we started organizational and human resource review. The organization review is expected to ensure our institutional structure is aligned to deliver the objectives of our Strategic Plan and improve the efficiency, effectiveness and impact in contributing to sustainable development in the Member States. We successfully completed the first grants programme provided to 14 institutions in 10 Member States. The grants program demonstrated the usefulness of geo-information in national development and increase the

penetration of the use of geo-information in Member states. We continued with the process of implementing Quality Management System at RCMRD. The system enables us to consistently meet customer satisfaction and assure quality of services.

RCMRD values partnerships and using existing synergies between institutions to achieve its mission. In 2015, our partnership with NASA and USAID in the SERVIR Programme was extended for a further period of five years and will expand its activities in RCMRD member States. We are partnering with the Intergovernmental Authority for Development (IGAD) on two projects; African Monitoring of Environment and Security in Africa and capacity development programme on the use of geo-information in sustainable development. The number of our partners is growing and among them are European Space agency, Centre for Scientific and Industrial Research of South Africa, Twenty University/ ITC the Netherlands, UN agencies and universities in the region.

The 49th Governing Council of RCMRD was held in November 2015 in Nairobi, Kenya. Sixteen Member States and the Economic Commission for Africa attended. The Governing Council reviewed and approved the Centre's 2016 Work Plan and Budget. It also reviewed and approved important policy documents that are expected to improve corporate governance and institutional development of the Centre.

In conclusion, I wish to most sincerely thank RCMRD staff, our member States, development partners and clients for their support and cooperation that significantly contributed to our achievements in 2015. I also take this opportunity to appeal to them for their continued support as we tackle the challenges in the coming years and achieve our aspirations to be a premier centre of excellence in the provision of geo-information services to Member states and beyond.



# REMOTE SENSING, GIS AND MAPPING DEPARTMENT

During the reporting year 2015, the Department successfully implemented various activities that were included and approved in the 2015 Work Plan. The Annual Work Plan itself was derived from the 2015–2018 Strategic Plan. The Department provided services to Member States and other stakeholders during the reporting year. The services were grouped into the following categories: project implementation, training, advisory, research and development (R&D) and data dissemination.

## Project Implementation Service

The Department successfully implemented a record of over twenty projects in 2015. Each project had its own unique nature characteristics with regard to the data input, implementation methodology, and output/deliverable packaging. The major ones are the following:

### SERVIR–Eastern and Southern Africa (SERVIR–ESA)

SERVIR Program is a partnership between RCMRD, NASA and USAID whose objective is to improve environmental management and resilience to climate change by building capacity of institutions in the member States to integrate earth observation and geospatial technology in environmental decision making.

The Projects that were successfully implemented under the SERVIR-ESA project were continuations of the long term engagements stipulated under 2013–2015 SERVIR-ESA work plan. The Projects were on the following thematic areas:

#### Agriculture Risk Management

Under Agriculture Risk Management SERVIR-E&SA the department carried out three (3) major projects activities:

- Crop Monitoring and Yield Forecasting;
- Frost Forecasting and Mapping; and
- Land Potential Knowledge Systems.

Activities undertaken under Crop Monitoring and Yield Forecasting included; gathering historical crop yield data for Kenya and National Workshops in Ethiopia, Uganda, Tanzania, Malawi and Zambia. During the workshop, SERVIR E&SA project team introduced the new Regional Hydrological Extremes Assessment System (RHEAS) and other relevant tools as well as discussed data availability for this purpose.

The second activity undertaken was Frost Forecasting and Mapping. This involved development of automated mechanism to receive routine temperature and inclusion of temperature forecasts into frost monitoring system and forecasting system.

Land Potential Knowledge Systems (LandPKS) development was also undertaken. The development included the following tasks; data collection from key organizations and agencies, GIS Analysis for all datasets in Namibia and Kenya for input to support implementation of the Land PKS regional and local databases, development of mobile applications that allow farmers to share soil data from their farms and obtain online feedback on soil suitability.

#### Sustainable Landscapes

Under this thematic area four (4) major activities were carried out:

- Land Use Land Cover (LULC) Mapping for Green House Gases (GHG) Inventories;
- Mapping Seagrass;
- Mangrove Forests mapping; and
- Coastal Erosion Hotspots mapping.

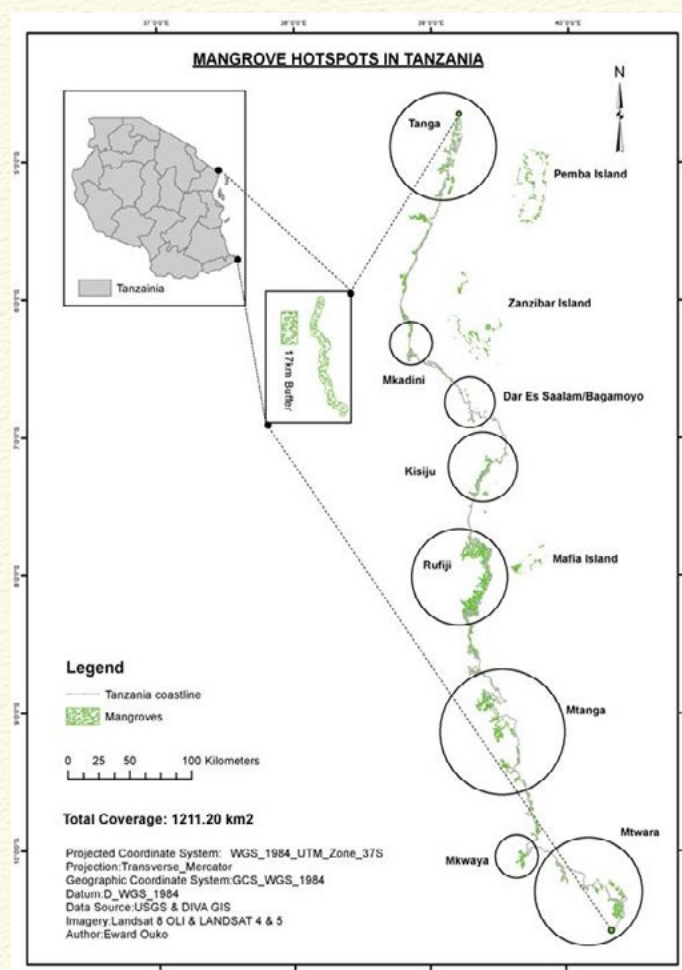
The GHG project was one of the activities that continued from 2014 and completed in June 2015. Nine (9) countries were covered under this project namely; Namibia, Zambia, Botswana, Ethiopia, Rwanda, Tanzania, Lesotho, Malawi and Uganda. Capacity building programmes were conducted to staff in the nine countries on how to produce land cover maps. Local stakeholders from

different government ministries had a chance to see and interrogate GHG products. Its objectives is to develop capacity of the project countries to prepare land cover change maps and analyze how change in land cover impact on Green House Gas emissions.

The land cover maps produced are considered as fundamental datasets requisite for applications in various sectors of national development and also critical for building National Spatial Data Infrastructure (NSDI).

Under this theme, mapping of Seagrass, Mangrove Forests and Coastal Erosion Hotspots were also undertaken in four (4) countries bordering Indian Ocean including Kenya, Tanzania, Mozambique and Madagascar. The following activities were successfully accomplished;

- Field data collection;
- Development of Seagrass and mangrove Maps;
- Analyses for SeaGrass, mangrove and coastal erosion for the project countries;
- Development of a Seagrass and mangrove visualization tool with additional data layers querying and analytical capabilities; and
- Conducted training for collaborating institutions to develop capacity in sea grass and mangrove mapping.



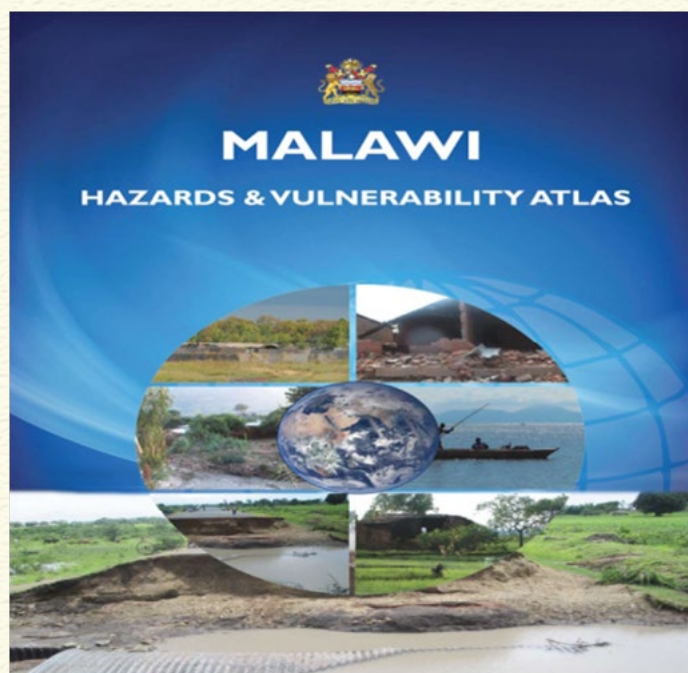
*Mangrove Mapping field work in Tanzania*

## Disaster Risk Management

Under Disaster Risk Management thematic area two (2) major project activities were completed. This include activity on; Web-based National Disaster Early Warning Information Systems for Rwanda with two sub-activities – Web portal development and National Disaster Risk Reduction (DRR) Training. The second project was Hazard Risk Identification and Mapping in Malawi with two sub-activities – development and launch of a Hazard and Vulnerability Atlas and National end user training on geospatial technologies for Disaster Risk Reduction (DRR).

The atlas contains maps and statistics that clearly show the frequency, intensities and location of different hazards such as floods, droughts, diseases and earthquake. It also shows details of vulnerability of the population to these hazards.

All the above implemented activities were accomplished and deliverables were availed including hard copies of the Atlas, training manuals and data DVD.



*Malawi's first Hazards and Vulnerability Atlas*

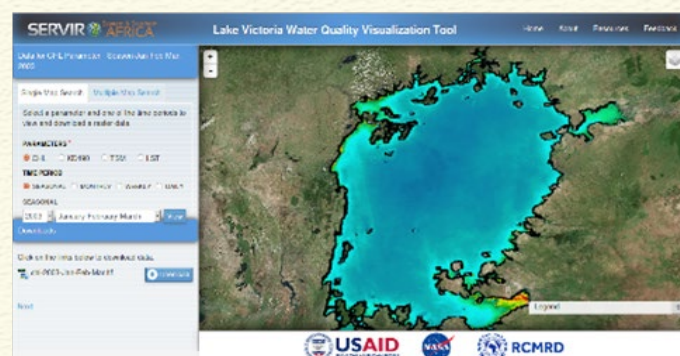
## Water Resources

Under Water Resources thematic area SERVIR-E&SA carried out two (2) major project activities namely; Lake Victoria Water Quality and Ecosystem Management and Coupled Routing and Excess STorage (CREST) hydrological modelling.

In particular, the department developed maps and analysis for water quality levels and ecosystem degradation/erosion in addition to conducting training workshop for stakeholders in natural resources management in

Malawi, Uganda, Tanzania and Kenya.

The second major activity implemented under this theme was modelling for flood early warning and alerting. The project was successfully implemented for Kenya (Nzoia and Nyando basins), Uganda (Malaba and Manafwa basins) and Rwanda (Sebeya basin) and Namibia (Okavango basin).



Under the same thematic area the department further implemented two data validation missions for Uganda and Rwanda. Additionally, the department also developed a GIS Flood Tool to enable display of flood extent maps. Training workshops for various staff in the water sector was also conducted in both Uganda and Kenya.



*Hydrological modeling workshop in Uganda*

## Geo-information Technology (GIT)

The major activities implemented under this theme were; Spatial Data Infrastructure (SDI) and database development, metadata creation at national and regional levels.

Under this theme a Regional Spatial Data Infrastructure Forum was held in Kigali, Rwanda, Sixteen (16) member States were represented. Technical Training on Spatial Data Management was held in four countries. The training was meant to support SDI efforts in; Mauritius, Zambia, Swaziland and South Sudan. In this context, the

department developed and operationalised Geospatial data portals for four countries namely; Swaziland, South Sudan, Rwanda and Mauritius.

## Grants Programme

The grant programme commenced in 2014 and was completed in 2015. The overall objective of the grants programme was to improve environmental decision making by disseminating earth observation data, and tools to institutions for making better decisions. 14 institutions from 9 member States were funded to the tune of between USD\$22,000 and USD\$50,000.00

The department organized stakeholder close-up meeting in Arusha, Tanzania in August 2015. This provided a forum during which all success stories were discussed and shared among grant awardees. Indeed, the small grant project was one of the major accomplishments made by the department in our plan through EO science research setting.



*Grants Programme Workshop*

## Land Degradation Assessment and Forest Management Services Project

The department continued with implementation of the MESA project. The project started two years ago and is funded by European Union in collaboration with the African Union. The project comprises two key services namely; Land degradation assessment and Forest management services that have been implemented in Ethiopia, Uganda, South Sudan, Sudan, Kenya, Djibouti, Rwanda and Burundi.

The land degradation service is a continuation or consolidation of what was achieved during the previous African Modelling of the Environment for Sustainable Development (AMESD) project. Essentially, the products that were developed during AMESD were enhanced and disseminated in MESA.

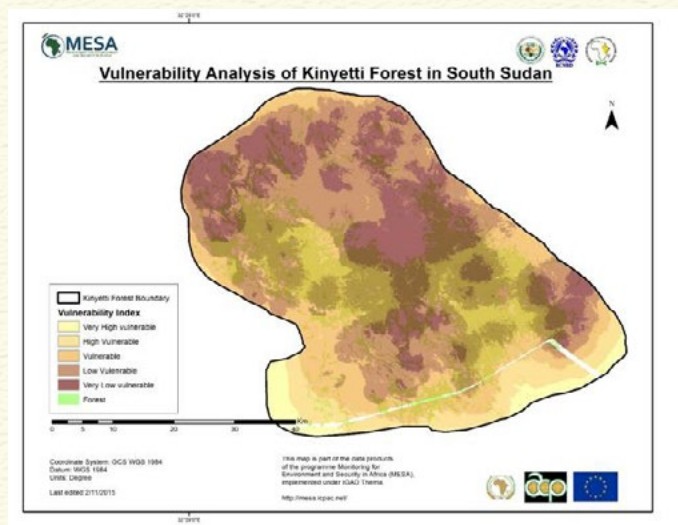
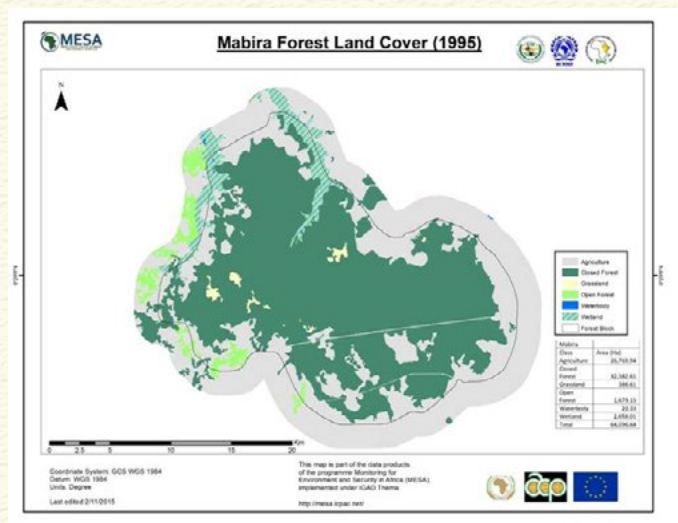
In 2015 the land degradation service focused more on enhancing development of extent and severity of land degradation at both the regional and national levels. Furthermore, it also encompassed consolidation of local hotspots for comprehensive assessment. The department carried out a field validation exercise for Kenya, Uganda, Rwanda, Burundi, Sudan, Ethiopia, South Sudan, Djibouti and Eritrea. The project deliverables include Bi-annual Maps and Bulletins at regional scale with focus on national products. A total of twenty four (24) national and regional revised land degradation maps and three (3) regional level bulletins were published for wet and dry seasons in all project countries.

Beyond maps and data products, decision-makers at all levels within the Inter-Governmental Agency on Drought (IGAD) region were informed and awareness created. They also participated in the Land Degradation (LD) seminars designed towards helping them understand the impacts of LD on social-economic development, ecological nature and how it affects the well-being of the society. This phase of the project will be closed by mid next year. The next phase will be inaugurated under the Global Monitoring of Environment and Security (GMES) in Africa in 2016.

Forest monitoring is a new service that was launched and undertaken by the department during 2015 within the framework of MESA. The main goal of forest service has been to obtain critical information on the distribution and changes in forest degradation and forest deforestation at

hotspot, national and regional levels. Using the derived information experts generated proposals and methods for reducing or stopping deforestation in the near-term. Through mapping this endeavors to steer forest processes in ten project countries by strengthening the capacity of local personnel to be able to monitor forest Reduced Emissions from Deforestation and forest Degradation (REDD+) process. The product derived from this technique will be useful for land use and forest change monitoring.

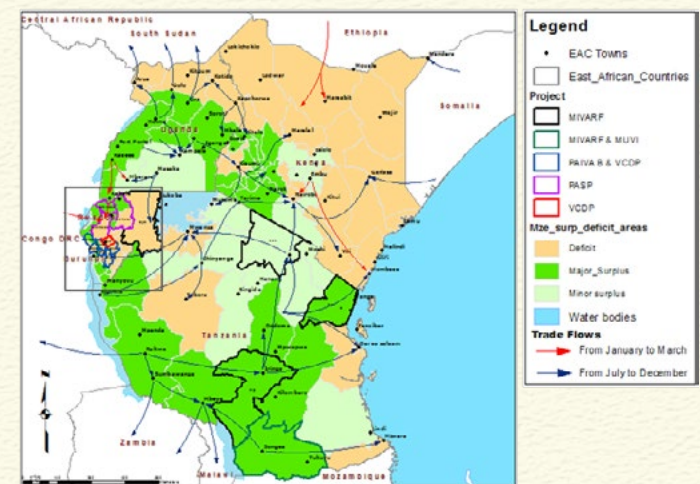
Under the forest service the department provided two products; one at the national level, and another at IGAD regional level. Forging ahead, the department will continue to provide deforestation rates and forest vulnerability using available modeling techniques.



## Trade in Staple Foods Project

The Project is a joint programme between RCMRD and Kilimo Trust of Uganda. The Department produced a GIS database and developed diagnostics of major market segments, their geographies and comparative advantage for the small scale farmers targeted by the International Fund for Agricultural Development (IFAD) and other partners under the project covering Rwanda, Burundi, Uganda, Tanzania and Kenya.

The department generated supply/demand maps showing several relevant features including; market centers, trade flows, and spatial comparative advantages of staple foods. Further, the training needs assessment exercise of the selected IFAD projects that included Kenya and Tanzania was also undertaken. The 1<sup>st</sup> phase of this project was completed at the end of 2015.



Regional Trade In Staples Map

## Flood Assessment in Lower Nzoia River, Kenya

The department mapped and analyzed the flood extent and its impact in the Nzoia River basin in Kenya. The objective of this project was to map flood inundation areas using remotely sensed data, GIS spatial techniques and hydrologic modeling integrated with economic analysis. Additionally, the department also predicted the flooding impact on socio-economic activities. To achieve this, the department worked with the Ministry of Water and Irrigation, Kenya to validate and calibrate anticipated products with support of the World Bank. Land use land cover map of the area, discharge condition of the water, spatial database and technical reports were submitted to the Ministry of Water and Irrigation.



*River Nzoia flood extent map*

## Hazard Atlas Project

The Project was carried out for the Drought Management Authority in Kenya with funding from UNDP. The project focused on three (3) counties namely; Turkana, Garissa and Tana River. The outputs delivered under this project were; Hazard Atlas maps presenting different climate phenomena categorized as drought, climate change, conflicts, human diseases, animal diseases, earth quake, volcanic eruption and floods. The department also implemented mapping and validation workshops in the three counties as part of project capacity building and awareness creation.

## Sondu River Catchment 3D Image Mapping Project

Sondu River Catchment Image Mapping Project focused on preparation of 3D visualization using high resolution image data. Sondu river in Kenya flows from the western fringe of the Kenyan Great Rift Valley to Lake Victoria. It is a region known for its high rural population density, encroachments to the natural forests, and degradation of natural forest like that of Mau. The Netherlands based organization on Sustainable Trade Initiative (IDH) supported this work. The objective was to understand environmental impact along the river ecology following a request by the Kenya Forestry Department. The project was completed well and products were submitted to the Kenya Forestry Department.

## Rapid Land Cover Mapping Project

The department implemented a Land Cover Mapping project in West Africa and specifically in Niger. The project focused on identification of cultivated, non-

cultivated areas and other land cover feature types. The project was implemented jointly with Famine Early Warning System Network (FEWSNET). The project was successfully completed.

## Training and Workshop Services

Most of the trainings implemented by the Department during the reporting year were part of project activities. Other trainings were implemented based on user demand from member States and different stakeholders who needed tailor made packages to enhance their specific requirements such as Land degradation modeling; Flood analysis; Geo-portal development and web mapping applications. The main trainings events that were conducted during the reporting year are listed below:

- Training on AIS Cartography GIS/RS and GPS Training, Two (2) weeks
- Trainings in Digital Cartography , Two (2) weeks
  - Training in Digital Image Processing and Ground Truthing, One (1) week
  - Geo spatial database development and management using ARCGIS , Two (2) weeks
- Geo spatial database development and management using ERDAS , Two (2) weeks
- Geo-node Admin Training, One (1) week
- Geospatial database development and management using Open source, Three (3) days
- GIS and Network Analysis, One (1) week
- GIS and remote sensing, Four (4) weeks
- Satellite-based Lake Water Quality Data Processing, One (1) week
- Crest Modelling, One (1) week
- On Job Training on Land Cover Mapping for GHG Inventories, Two (2) weeks
- Web Mapping Trainings in South Africa, Namibia, Botswana and Kenya, One (1) week
- Assessment and Training on Land and Land Related Fields in collaboration with Ministry of Urban Development and Housing, Ethiopia.

## Assessment and Training on Land and Land Related Fields in Ethiopia

This is one of the major projects that was carried out and involved many departmental staff. The training has the overall objective to assess the technical capacity of staff working in the Ministry of Urban Development

and Construction in Ethiopia. This is with a view to embracing the development of a modernized land information management system and its related digital database approaches.

During the year 2015 the department continued to provide input to this project where over 5,000 staff were evaluated by RCMRD. The department team further undertook the task to identify skills gap, revision of occupational standard tools and direct training of Government staffs at different levels of competences. The project was completed in November 2015.



*Web Mapping Training Held in South Africa*

## Advisory Services

The Department provided advisory services to our member States as follows:

- Preparation of Vulnerability Index Maps
- Through SERVIR project several Member States Rwanda, Mauritius, Malawi, Zambia, South Sudan and Swaziland were advised on establishment and enhancement of their National Geo-information Committee (NGIC).
- The department took advantage of various platforms established within major projects to sensitize policymakers on role of EO; geospatial tools and web based maps in decision making.
- Supporting Government of Kenya on Land Cover mapping for Green House Gas emission inventory
- Through project programs the department was further invited to participate in Regional forums – MESA SADC where a demonstration on the use of geo-information for environmental management was presented.
- Support in Establishment of Web based Disaster Information systems: The Department has been advising government of Rwanda on the establishment of disaster information system (Spatial Information and Data portal for Disaster

Risk Reduction in Rwanda – (SPIDERR).

- Support in Hazard Risk Identification and Mapping: The Department is advising Malawi Government on disaster risk and vulnerability mapping.
- Support in Health Risk Management: The Department is working with Zambian Government on Zambia health risk management system establishment. Inception meetings and data collection were undertaken successfully

## Research and Development

During the reporting year there were research activities undertaken in the framework of the projects being implemented.

- The department through MESA project published number of bulletins on land degradation monitoring service based on project research and as an outcome of the Land Degradation modeling applied research method. Different themes have been used in the bulletins relating to land degradation themes in particular; the Climate Change, Water Resource management, Food security, and Loss of biodiversity. The bulletins further elaborated on how human and other species life is affected as with regards to socio economic impact of environmental degradation and possible measures to reduce the consequences.
- On SERVIR program activities, the Department published an article regarding the applied Earth Observation use in projects we were implementing. The article was a chapter in a scientific journal. This work was submitted together with other articles based on our research projects for publication in NASA success stories series.

## Data Services

During the reporting year, the Department had undertaken data archiving, data retrieval and dissemination through sales and free data supply. Most researchers, university students and government institutions in the Region were receiving Landsat, MODIS and MSG satellite data for free from the Centre.

Some of the data dissemination and supply services undertaken during the reporting year are summarized as follow:

## MODIS Ground Receiving Station:

The station has continued to receive data from MODIS Aqua and Terra, NPP, METOP, Fengyoung3, NOAA18 and 19 satellites in real-time. The data are being used for various applications in the member States.

In collaboration with Council of Scientific and Industrial Research (CSIR) of South Africa the department was able to install two processing chains for MODIS data to produce; Surface Temperatures, Vegetation Indices and other vegetable products. Under this thematic area the department conducted a workshop on the use of MODIS data for Early Warning, Disaster Risk Reduction and Environmental Monitoring. Earth observation professionals and stakeholders attended the workshop.

## Data Archiving, Retrieval and Dissemination

The department undertook satellite data archiving, data retrieval and dissemination through sales and free data supply. The department provided commercial image supply and data sale to various clients. Another service was provision of free data to institutions toward supporting their research programs. Data from Landsat,

MODIS and Sentinel 1. Some of the data dissemination and supply services undertaken during the reporting year were part of the advisory services as summarized below;

Member State	Image provided	Client
Uganda	Very High Resolution Medium and Low Resolution	<ul style="list-style-type: none"> <li>Vegetable oil Development project</li> <li>Geomik International</li> <li>Praid Consultants</li> <li>Makerere University</li> </ul>
Tanzania	Very High Resolution Medium and Low Resolution	<ul style="list-style-type: none"> <li>Survey and Mapping Department</li> <li>Ardhi University</li> </ul>
Ethiopia	Very High Resolution Medium and Low Resolution	<ul style="list-style-type: none"> <li>Ethiopia Mapping Agency</li> <li>Addis Ababa University</li> </ul>
Rwanda	Medium and Low Resolution	<ul style="list-style-type: none"> <li>Universities</li> </ul>
Zambia	Very High Resolution	<ul style="list-style-type: none"> <li>PPHZ (NGO)</li> </ul>
Malawi	Medium and Low Resolution	<ul style="list-style-type: none"> <li>Department of Disaster Preparedness</li> </ul>
Kenya	Very High Resolution Medium and Low Resolution	<ul style="list-style-type: none"> <li>Ministry of Lands, Housing &amp; Urban Development</li> <li>County government of Muranga</li> <li>County government of Siaya</li> <li>County government of Mombasa</li> <li>Universities</li> </ul>
	Scanned Maps	<ul style="list-style-type: none"> <li>FAO Kenya</li> </ul>



Satellite image of Makupa crossing, Mombasa, Kenya

## LAND SURVEYS AND MANAGEMENT DEPARTMENT

### Projects Implementation Service

During the year under review, the Department undertook the following projects:

#### African Reference Frame (AFREF)

The Department continued supporting the AFREF project through advisory services to member States, maintenance the Continuous Operating Reference Station (CORS) located at the Centre and production of AFREF newsletter.

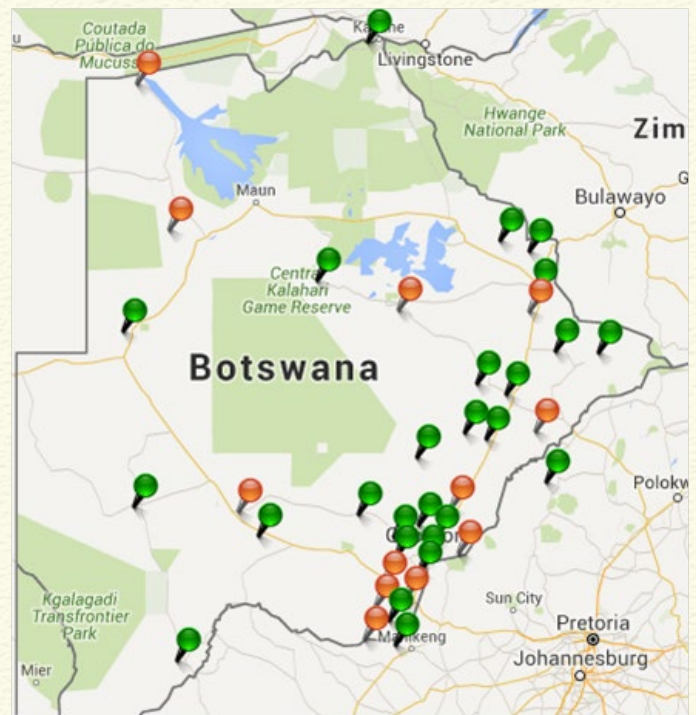
The Department continued to submit GNSS data to the international community through CORS in Nairobi for both the standard 24hr, 30" sampling interval data and 1" Real-Time GNSS data.

The Department also continued providing a free RTK and DGPS service in Nairobi. RTK is a centimetre accuracy service for up to 30km radius while DGPS is a sub metre accuracy service for up to 150km. The station and ITS services are also used in our training programmes on CORS. The Department produced two AFREF newsletters in May and October 2015.

#### Implementation of Continuous Operating Reference Station (CORS) Project in Botswana

The Department continued supporting the implementation of Real Time Geodetic Network in Botswana by procuring the necessary hardware and software and training on the use of the system. To date, over 38 CORS have been procured and installed. The CORS management software has been procured, installed and pilot tested including the use of rover receivers.

Training on CORS network management, the use and maintenance of the software and use of RTK corrections using rover network receivers has been provided to Department of Survey and Mapping and some land board surveyors. The CORS Network in Botswana is currently active and working and under continued improvement



GPS Network Stations in Botswana

#### Other Projects carried out by the Department

Other projects that the Departments participated in included GPS control and data processing and topographic surveys for various clients in Kenya

### Training and workshops Programmes

The Department organized the following courses:

#### Training on AFREF and Processing of Global Navigation Satellite System (GNSS) Data

Training on African Geodetic Reference Frame (AFREF) and Processing of Global Navigation Satellite System (GNSS) data was conducted in July 2015. Twenty six participants from RCMRD member States attended. The participants were from: Botswana, Ethiopia, Kenya, Lesotho, Malawi, Namibia, Tanzania, Uganda, South Sudan, Zambia and Zimbabwe. The main objective of the course was to build the required technical capacity to implement modern Geodetic Reference Frame in our member States. It was designed to provide practical skills in setting up Continuous Operating Global

Navigation Satellite System (GNSS) Reference Stations, processing of GNSS data and operationalization of AFREF project. The topics covered include instrumental set up, observation requirements and planning, geodetic network design, and data processing methods.



*AFREF/GNSS course participants during a practical session*

## Continuous Professional Development Workshop

The above-mentioned three (3) days course was held in May 2015 at RCMRD. The aim of the course was to enable participants identify and understand the new technologies and instrumentation in surveying and mapping fields. These included total stations, Global Navigation Satellite Systems (GNSS), Digital Levels, 3D mapping using high resolution stereo images, LIDAR, Laser scanners and airborne and drones for digital mapping. Vendors of modern surveying instruments participated by making demonstrations and presentations of their products in particular Total stations and GNSS systems. 48 surveyors participated in the workshop.

## Training on Innovative Concepts, Tools and Practices in Land Administration

The training was hosted by RCMRD in August 2015 and was organized in collaboration with Global Land Tool Network (GLTN) of UNHABITAT.

The aim of the training was to bring together land officials, technical personnel and experts from a range of relevant disciplines, for joint learning on innovative and effective land administration tools and practices. The following areas were addressed:

- Information on key land administration cases,

approaches, achievements and challenges shared.

- Innovative concepts, tools and practices in land administration described, analysed and practically illustrated
- Joint learning through exchange of information, knowledge and expertise, plus practical illustration and application
- Action Plans formulated for in-country follow-up
- Forty participants from Botswana, Burundi, Ethiopia, Kenya, Lesotho, Malawi, Namibia, Netherlands, Nigeria, Rwanda, South Africa, South Sudan, Tanzania, Uganda, Zambia, Zimbabwe, Cameroon and Iraq attended the course.



*Training Course on Innovative Concepts, Tools and Practices in Land Administration in Session*

## Training of Trainers Workshop in Transparency in Land Administration

The training was held at RCMRD from 6<sup>th</sup> to 8<sup>th</sup> October 2015. Two parallel workshops were conducted for both the English and French speaking countries in Africa. The course was organized by RCMRD, Global Land Tool Network (GLTN) and Africa Land Policy Initiative (LPI).

The overall objective of the learning event was to increase the capacity of key change agents and other land sector professionals of the importance of transparency in land administration by enhancing their understanding of land governance challenges and strengthen their ability to address issues of corruption within the land sector. Specifically, the training aimed at facilitating better understanding of concepts and tools required to understand transparency in land administration in order to improve governance in the land sector, demonstrate how effective transparency in land administration could lead to improved access to

land and more secured land rights for both women and men and increased participation for all in land matters, define and develop competencies that can contribute to improving transparency in land administration.

Sixty (65) participants from, Burundi, Cameroon, Chad, Democratic Republic of Congo, Djibouti, Ethiopia, Kenya, Lesotho, Madagascar, Malawi, Namibia, Rwanda, Senegal, South Sudan, Swaziland, Tanzania, Uganda, Zambia, and Zimbabwe attended the course.



*Participants of the Training of Trainers Workshop in Transparency in Land Administration*

## Training on Land and land related fields in Ethiopia

Over 2000 professionals in land and land related field's i.e. cadastral survey, mapping and photogrammetry, urban planning, valuation, land registration were trained and assessed for professional competency registration in Ethiopia. The candidates were drawn from Ministry of Urban Development and Construction, Federal Democratic Republic of Ethiopia. The training took place from July to November 2015 in Ethiopia.

Under this program, surveying and mapping instruments including Geodetic GPS, Total Stations, Theodolites, and Levels from the institutions mentioned above were serviced, calibrated and repaired. Also technicians from these institutions were also given some basic training on servicing the equipment under their care.

## East African Land Administration Network Workshop (EALAN)

The 7th EALAN Annual General Meeting (AGM) and Workshop was hosted by the Institute of Land Administration of Bahir Dar University Bahir Dar (ILA/BDU), Ethiopia between 21st July and 22nd of July 2015; This year's meeting was held under the theme "The State of Land Administration in Eastern African Countries: Comparative Overview".

The AGM and the Workshop drew attendance from Land Administration and Management experts from both academia and industry. Participants were drawn from Rwanda, Uganda, Tanzania, Kenya, Ethiopia, Burundi and South Sudan. The AGM and the Workshop were supported by the United Nations Economic Commission for Africa-Land Policy Initiative (UNECA-LPI) and the Land to Nature Development (LAND) of USAID, Ethiopia

## Pro-Poor Land Tools Training

The Department facilitated a two day "Grassroots Learning Event" in November 2015 conducted by GLTN on Pro-Poor Land Tools. The aim of the event was to provide opportunity for key grassroots organizations involved in the land sector to acquire new knowledge, skills and as well as highlight the value of meaningfully engaging grassroots organizations to promote the vision of pro-poor, gender-sensitive land interventions at country level and build capacity for implementing GLTN's Pro-Poor Land Tools. GLTN Partners have identified and worked on different land tools that relate to land rights, records and registration; land use planning; land management, administration and information; land law and enforcement; and land value capture. The lack of these tools is believed to have hindered the large scale implementation of land policies worldwide.

The objective of the trainings were to increase the knowledge, skills and capacities of grassroots organizations in the use of key GLTN tools, particularly the Social Tenure Domain Model, discuss the best way to increase meaningful engagement of grassroots organizations in global and country level work of GLTN. Participants were drawn from Kenya, Zambia,

Philippines, Ethiopia, Malawi, Uganda, Mozambique



### *Pro-poor Land Tools Training*

## Advisory Services

### Assessment of Rwanda CORS Project

This was carried out from 26th October to 7th November 2015 on request by Rwanda. RCMRD had earlier carried out the feasibility study and made proposal on the implementation of the project. The Centre was therefore invited to check that the CORS installation was carried out according to international standard specifications and operating to the required specifications.

The Rwanda CORS network is made of seven CORS with a Network centre in Kigali. Any user with GNSS Network rover receiver can access RTK corrections in the whole of Rwanda.

## Engineering Section

The section continued to render services in repair, servicing and calibration of surveying instruments to government and private practitioners in the member States. During the reporting period the Section rendered services to five member States, namely, Malawi, Uganda, Swaziland, Botswana and Kenya.

Country	Number of Instruments	Service costs in USD\$	Replacement value in USD\$
Malawi	17	14,500.00	300,000.00
Uganda	27	14,500.00	339,500.00
Swaziland	14	6,950.00	153,000.00
Botswana	23	12,000.00	325,750.00
Kenya	18	3,600	144,000.

to modernise and improve calibration and service of instruments. The section acquired Kenya Bureau of Standards (KEBS) Certification to service and calibrates surveying instruments. This is expected to improve customer confidence and satisfaction with our services.

## IT Training Centre (ITTC)

During the reporting year, ITTC implemented the new corporate training programmes which were restructured last year. The new programmes have been well received by clients. One hundred and twenty (120) students from Kenya, Uganda and South Sudan were trained. To increase the uptake of the course an integrated marketing strategy has been developed and implementation is on-going.

During the year, the section launched two international training programs:

- ICDL (International Computer Driving Licence) for basic computer qualifications
- Certificate which has computer basic qualification and professional courses

The section has also started partnership with other organizations so as to offer professional and customized training. 32 participants were trained under this programme.

The section is also exploring offering certificate courses and diploma programmes in conjunction with Geo-



*IT training class in session at RCMRD*

The engineering section also procured a new collimator

# MANAGEMENT, ADMINISTRATION AND HUMAN RESOURCE

The 2015 Work Plan rolled out measures to position the Centre strategically to play a central role in the promotion of sustainable development in member States through the use of geo-information. The Work Plan dealt with the provision of capacity building and project services required by member States and clients as well as provision of advisory services and forming networks of partners dealing with geo-information research for sustainable development. RCMRD management facilitated all the departments to perform their activities.

## Strategic Partnerships

The Centre has continued to establish beneficial partnerships and collaboration with relevant institutions within and outside the region in research, development and application of geo-information for sustainable development. In this regard the Management engaged with Member States institutions and development partners in pursuit of areas of collaboration. In 2015 the Centre entered into partnerships with several organizations to undertake various activities. Some of these were:

- MoU with United the United Nations Institute for Training and Research (UNITAR)
- MoU with Lake Victoria Fisheries Organization (LVFO)
- RCMRD signed a 5 year Agreement with USAID on SERVIR Project
- MoU with Land Policy Initiative (LPI), Regional Integration and Trade Division of the UN Economic Commission (UNECA)
- MoU with UN-Habitat in Support of Global Land Tool Networks' (GLTNs') in areas of Capacity Development Initiatives
- MoU with SADC Monitoring of Environment and Security in Africa project on providing Land Degradation services
- MoU with Woods Hole Research Center of the USA to provide capacity building on carbon stock estimation and forest degradation

## Visits to member States by the RCMRD Management

The RCMRD Director General led senior staff to visit several member States. The purpose of the visits was to familiarize management with the activities of government institutions and expose the institutions to RCMRD services as well as identifying areas of mutual

benefit to the member States and RCMRD.



*MOU Signing between RCMRD and LVFO*

## Ethiopia

The Director General met with His Excellency, Desalegn Ambow, State Minister of Urban Development and Construction of the Federal Republic of Ethiopia to discuss the launch of phase 2 of an ambitious training and assessment programme in land related fields for members of staff from the Ministry of Urban Development and Construction and local governments in Ethiopia. Close to 2000 members of staff were trained and assessed in Cadastral Surveys, Land Registration, Urban Planning, Land and Property valuation and land information systems. The programmes aim is to improve land management and administration and service delivery in the land Sector. The programme took three months and was conducted in three canters in Addis Ababa, Bahar Dar and Hawassa. RCMRD is partnering with three other institutions in implementing the programme.



*Ethiopia Minister, His Excellency, Desalegn Ambow with Director General RCMRD*

## Malawi

The Director General met the Minister for Lands, Housing and Urban Development, Malawi Hon. Paul Chibungu in Lilongwe in August 2015. During the meeting they discussed cooperation between Malawi institutions and RCMRD. The cooperation involves training and project implementation in Land Cover Mapping, Hazard Mapping, Land Information Management and Spatial Data Infrastructure. The Minister commended RCMRD for support provided to the Government of Malawi in the production of Land Cover Hazard Maps for the Country. Also present during the meeting were Principal Secretary Mrs. Ivy Luhanga and Surveyor General of Malawi, Mr. Felix Mangani.



*Malawi Minister Hon. Paul Chibungu visit to RCMRD*

The Director General further paid a courtesy call to the Hon. Minister of Disaster Management and Refugee Affairs (MIDIMAR), Hon. Minister Seraphine Mukantabana. During this meeting, the DG briefed the Hon. Minister about the Centre's projects and activities in the areas of Disaster Risk Reduction (DRR) and particularly the support the Centre is offering to MIDIMAR. RCMRD has been supporting the Ministry establish a thematic DRR portal, the Rwanda Spatial Information and Data Portal for Disaster Risk Reduction (Rwanda-SpIDeRR).



*Rwanda Minister Dr. Biruta with RCMRD Director General*

## Rwanda

The Director General met the Rwanda Minister of Natural Resources Hon. Dr. Vincent Biruta in March 2015 in Kigali Rwanda. The purpose of the visit was to discuss progress on various projects/activities that RCMRD is implementing in Rwanda and discuss further cooperation in different areas in the application of geospatial technologies. During the meeting, the Minister acknowledged RCMRD's contribution to capacity building and institutional strengthening for various agencies in Rwanda. He particularly acknowledged RCMRD's contribution in landcover mapping for Rwanda, advise on setting up of the Rwanda Geodetic Reference System, capacity building activities and other projects such as in disaster risk reduction in Rwanda. He also acknowledged RCMRD's technical and advisory services assistance to enhance the capacity of national academic institutions such as the National University of Rwanda.

## Uganda

The Director General met Mr. Gabindadde-Musoke, the Permanent Secretary, Ministry of Land and Urban Development in Kampala, Uganda on 27th, October, 2015. Also present during the meeting was Mr. Wilson Ogaro, the Commissioner of Survey and Mapping, Uganda. The Permanent Secretary thanked RCMRD for the support they have provided to the Ministry and other institutions in Uganda. He requested RCMRD to support his Ministry in training of staff in Geo-database creation and management and conversion of hardcopy maps into digital formats.

## Zambia

The Director General held discussions with the Permanent Secretary, Ministry of Lands, Natural Resources and Environmental Protection, Mr. Barnaby Mulenga and the Surveyor General, Mr. Joseph Minango in Lusaka in July 2015. The discussions centered on establishment of NSDI in Zambia and fast tracking mapping for land registration.

## Distinguished Visitors to RCMRD

### Visit to RCMRD by Hon. Paul Chibingu, MP, Minister for Lands, Housing and Urban Development, and Republic of Malawi

Hon. Paul Chibingu, MP, Minister for Lands, Housing and Urban Development, and Republic of Malawi visited RCMRD in April 2015. The purpose of the visit was to familiarize him with RCMRD programs and activities. During the visit he held a meeting with Management of RCMRD. The Minister was accompanied by Malawi High Commissioner to Kenya and Malawi Commissioner of Physical Planning.

### Mrs. Maroane Liahelo Dingiswayo, Principal Secretary, Ministry of Local Government, Chieftainship and Parliamentary Affairs, Kingdom of Lesotho

Mrs. Maroane Liahelo Dingiswayo, Principal Secretary, Ministry of Local Government, Chieftainship and Parliamentary Affairs, Kingdom of Lesotho led a delegation from the Kingdom of Lesotho on a familiarization visit to RCMRD in April 2015. The delegation was composed of Director of Physical Planning and Director of Housing. The delegation thanked the Centre for the support it gave to the Kingdom of Lesotho in capacity development programmes and Land Use/Land Cover Mapping.

## ISO Quality Management System Certification

RCMRD was awarded the ISO 9001: 2008 Quality Management System (QMS) certification in July 2014. An External audit was carried out in February 2015. Internal Audits were done in January and August 2015. The importance of these Audits is to take corrective actions necessary to ensure continual improvement of QMS at RCMRD. In order to improve RCMRD capacity to carry out Internal Audits, 16 Internal Auditors were trained, making the number of Internal Auditors to 25; this will enable us to carry out internal audits as required. QMS will steer the RCMRD in achieving member States and customer satisfaction by continually improving its processes, products and services to ensure they meet customers' requirement.

## GPS Donated to AFREF programme

The Centre received a donation of GPS receivers from Ordnance Survey, United Kingdom for establishment of modern geodetic reference networks in member States. The GPS Receivers were distributed to the following member States Burundi, Lesotho, Malawi, South Sudan, Sudan, Uganda, Tanzania, Zambia, Zimbabwe, Swaziland and Ethiopia.

## Regional Forum on National Spatial Data Infrastructure

RCMRD organized a Regional National Spatial Data Infrastructure (NSDI) Forum in Kigali, Rwanda in July 2015 to bring together high level officials from RCMRD Member States currently implementing or anticipating to implement NSDI initiatives. The forum was hosted by the Rwanda Natural Resources Authority (RNRA) Ministry of Natural Resources; the Forum drew 59 participants representing 16 RCMRD member States. The Forum's main objectives were:

- Empower policymakers with the tools and knowledge to engage their countries in advancing geospatial data policy, access, and use
- Bring policymakers, technocrats, practitioners and users of spatial information under a forum to discuss experiences and lessons learnt
- Establish a community of practice comprising policy and technical stakeholders to champion uptake of SDI policy
- Equip participants with the knowledge, tools, and awareness on how to implement a successful NSDI initiative while developing guidelines on best practices for upcoming engagements

The participants were also given the opportunity to participate in a review survey for SDI implementation in their respective countries. The survey enabled the participants to identify SDI components that are lagging behind in their respective countries and would require improvements to achieve required levels. Areas identified for most countries included financial resources and funding arrangements, lack of policies and legal frameworks for SDI, and inadequate geospatial human resources.

There was consensus among the delegates that they would commit to becoming champions of NSDI in their countries, becoming advocates of geospatial data sharing and dissemination, being members of a community of practice that will champion awareness of NSDI and recognize RCMRD's continued support to the Member States in their efforts to achieve a functional

NSDI including capacity development and technical support as required.

## Implementation of the Communication and Resource Mobilization Strategies

During the reporting year, we implemented the Centre's communication strategy for effective out-reach to its stakeholders in order to enhance its corporate visibility and image. This has strengthened our relations with member States, existing clients and partners, as well as new ones.

We published 3 e-Newsletters and distributed them widely.

In order to better implement the resource mobilization strategy, we improved the strategy and supportive mechanisms were put in place. A temporary staff was recruited to support the resource mobilization efforts.

USAID and UNDP have recognized RCMRD as a Public International Organization after carrying out audits of RCMRD governance and financial management. This means that USAID and UNDP will be able to fund RCMRD directly through different ongoing programmes.

## Strengthening of institutional, planning, monitoring and evaluation

During the reporting year management embarked on establishment and operationalization of effective and efficient institutional internal audit, planning, monitoring and evaluation and quality assurance systems through strengthening of the internal financial and assets audit processes and procedures. In this regard a Monitoring and Evaluation (M & E) Committee is functional. M & E tool was developed and is being used. Internal Audits were carried out in four sections at the Centre.

## 49<sup>th</sup> Governing Council Meeting

The 49<sup>th</sup> RCMRD Technical Committee and Governing Council meetings were held in Nairobi, Kenya from 16th to 20th November 2015. The Governing Council meets annually to review and approve RCMRD's Annual Work Plan and budget and is composed of Permanent/Principal secretaries from member States responsible for the activities of RCMRD. The 49th Governing council discussed the 2016 Annual Work Plan and Budget and approved the same for implementation.

Sixteen Member States and United Nations Economic Commission for Africa (UNECA) attended the meeting. The Member States were: Botswana, Burundi, Ethiopia, Kenya, Lesotho, Malawi, Mauritius, Namibia, Rwanda, South Sudan, South Africa, Swaziland, Tanzania, Uganda, Zambia and Zimbabwe. The meetings were chaired by Federal Democratic Republic of Ethiopia, Ethiopia, the current chairperson of the Governing Council.



*Delegates of the Governing Council meeting held in Nairobi, Kenya in November 2015*

## Administration

The Administration and Human Resource Section continued facilitating implementation of planned activities by providing the following support services:

## Physical Infrastructure

The following activities were undertaken in order to improve the facilities and infrastructure of the Centre:

- General maintenance of buildings and grounds.
- Renovation and security improvement of Data Office.
- Replacement of furniture in various offices.
- Increasing office space in Block D
- Increasing office space in block E
- Painting various buildings, offices and labs.
- Replacement of conference room chairs.
- 

## Transport and Protocol Services

The main transport services that were provided were as follows:

- Provision of transport to staff, guests, course/workshop participants and dignitaries
- Maintenance and servicing of vehicles.
- Valuation of vehicles for insurance purposes.

- Supporting five field trips
- Disposal of 4 vehicles and procurement of 3 vehicles.

## Protocol Services

The following activities were undertaken with regard to Protocol services:

- Processing of VAT and duty exemptions.
- Acquisition of two airport permits for senior staff
- Processing of re-entries, work permits and Diplomatic Identity Cards for foreign staff and their families. Clearing of five (5) imported Motor vehicles and surveying equipment.
- Processing of Visas for staff and course participants.

## Library Services

The following activities were undertaken in the Library:

- Processed 4000 information materials that included books, journals, newspapers and reports, whereas 1600 materials were weeded.
- Purged 1600 items from the database mainly newspaper records and other unwanted old materials.
- Organised 2200 information materials.
- Conducted Library registration and user education for 20 staff
- Maintained support, upgrades and data hosting for the Library Management system and two hand held scanners.
- Received and processed 177 donated information materials.
- Trained 4 interns.
- Maintained subscription of newspapers and e-databases.
- Acquired 1 printer and a scanner.
- Assisted in automation of Centre's Registry and ITTC records.
- Disseminated information to all staff.

## Security Services

During the reporting period under Security services, the following activities were undertaken:

- Servicing of fire-fighting equipment twice during the year.
- Issuing security advisories.
- Implementing First Aid training.

- Providing security to staff and Centre's premises.
- Servicing of Electric Fence.
- Upgrading IT equipment for Security section.

## Human Resource Management

The following activities were undertaken in Human Resource:

### Organisation Review

Following the Governing Council approval for the Organisation Review of RCMRD to be conducted, the exercise, which is a comprehensive one, started in September 2015. The objective is to address the critical Human Resource organizational challenges the Centre faces. It involves reviewing Departments; creating core positions; conducting job analysis and job evaluation; carrying out work load analysis and developing a scheme of service, amongst the key issues to be tackled.

### Recruitment

The Remote Sensing Officer under the Remote Sensing, GIS and Mapping Department who was recruited in November, 2014, took up the position in January, 2015. Under the SERVIR East & Central Africa Project, the recruitment of User Engagement Lead; Capacity Building Lead; Monitoring & Evaluation Specialist, and Communication & Outreach Expert was undertaken. In the same Project, a System Developer/IT System Administrator was appointed in January, 2015.

Two GIS Technicians and Two Remote Sensing Technicians recruited in December, 2014 assumed their positions early in 2015. A Human Resource Assistant was recruited in March, 2015 and a Land Information Management Officer was recruited in October, 2015. The other recruitment was that of a Resource Mobilisation Specialist in March, 2015. Two local short term consultants for GHG Project Evaluation were recruited in June, 2015 for Malawi and Namibia.

## Resignations

Several members of staff departed from the Centre to pursue other interests. These included a Finance Officer who left in May, 2015 after serving for Three years; a Chief Engineering Technician left in March, 2015 after being with the Centre for 16 years. A Web Services and System Developer, who had been with the Centre for 5 years resigned in February, 2015. An IT Administrator also left in May, 2015. He had been with RCMRD for 7 years.

## Performance Management

The Centre continued implementing the Performance Management System for the Centre's staff. All the more than 60 both regular and project staff of the Centre completed their Work Plans and Mid-Year Performance evaluation was undertaken at the end of June, 2015. End of the year performance appraisals would be carried out between November and December, 2015.

## Staff Training

All the staff of the Centre underwent Team Building Training on 25th September, 2015 whose theme was achieving high performance through team work. It took place within Nairobi. A number of team building tactics and games as well as organizational issues were learnt and their application was aimed at enhancing staff performance.

In support of the ISO 9001:2008 Quality Management System being implemented by the Centre 16 staff members underwent Two days ISO Internal Auditors training in June, 2015 to beef up the number of Internal Auditors. Several Technical staff attended a Monitoring & Evaluation training programme in April, 2015. Eleven staff members attended First Aid Training in June, 2015. Four staff members attended a One week ESRI GIS software solutions training in Dubai in February, 2015. Geo-information Training Coordinator attended a Two week Hydro modeling training. A number of Remote Sensing Technicians participated in such training as Satellite Bases Lake Water Quality Monitoring,

Agriculture Modeling, Vulnerability Index Mapping and Forest Mapping.



*Staff Training*

Transport and Protocol Officer attended Protocol and Etiquette training in South Africa in January, 2015. An Engineering Technician attended a One week training on servicing of Surveying instruments with South Company in China. An Engineering Technician attended Method Validation and Uncertainty of Measurement training in Nairobi. The Accountant, Assistant Accountant and Internal Auditor attended the Institute of Certified Public Accountants of Kenya (ICPAK) continuous development training programmes. The Internal Auditor also attended training in Auditing in Turkey in September, 2015. IT Training Coordinator attended a professional training programme organised by the IT professional body in October, 2015. Librarian who also serves as Deputy Management Representative for ISO Quality Management System attended one week training for ISO Lead Internal Auditors in Tanzania in October, 2015. Three staff members attended Customer Relations Management System training in October, 2015 in Bangkok, Thailand supported by SERVIR Project.

A number of staff were undertaking self-sponsored training in local colleges and universities on part time basis to acquire more knowledge and improve their professional skills. A Senior GIS Technician was pursuing a Master of Science in Geo-Spatial Information System. A Remote Sensing Technician

was undertaking an MSc in GIS course. The Marketing and Outreach Officer graduated with an MSc in GIS & Management. The Digital Surveyor was undertaking a Master of Science degree in Geo-information Systems. The Librarian training for an MSc in Information Science was on going. A Procurement Assistant was continuing with a Bachelor of Commerce degree programme; an IT Lecturer embarked on MSc in IT; and the Receptionist was undertaking a Bachelor's degree in Business Leadership. An Accountant was undergoing a Master of Business Administration programme while an Assistant Accountant was pursuing a Bachelor of Accountancy degree. An Administrative Assistant for IT Training Centre was undertaking a Bachelor of Procurement degree course. Five Remote Sensing staff were undertaking MSc in GIS sponsored by the SERVIR project.

## Finance Section Grants Program

The Finance Section had been helping in the implementation of the Small Grants Program which was funded by USAID and NASA to the tune of USD450, 000. The aim of this program was to support member State institutions in implementing projects of between USD22, 000 – USD50, 000. A total of 14 grantees from various member States had been awarded the grants and the implementation was done during the year and successfully completed and all grantees had been paid by RCMRD as at 30th September 2015.

## Upgraded accounting system and asset tagging

The upgraded accounting system has enabled improved financial reporting. This has improved regular reporting on performance of each project / department. The consultant engaged to tag all assets visited the centre and physically verified all the assets, identified all obsolete assets which were sold out. The consultant then developed an improved fixed assets register where all assets were captured and tagged. The register was then uploaded into the accounting system and all staff in the accounts section trained. It is now easy to track

the assets to specific locations and staff members.

## Procedures and Documentation

In a bid to improve the procurement process, the Finance Section advertised for tender of prequalifying suppliers to be engaged by RCMRD in the 2015 financial year in order to establish a long term relationship thus improving efficiency.

The finance Section has provided to the external Auditors all the records, information and explanations necessary in the preparation and auditing of the Financial Statements for the year ended 31st December 2014. The management comments for year 2013 and 2014 audit were also provided by the accounts section.



# DISTINGUISHED VISITORS TO RCMRD

During the year under review, the Centre received over 15 distinguished visitors. These included:

Yasmisn S. Abdukakir	CEC Lands Marsabit County, Kenya	April 2015
Stuart Ligomeka	Ministry of Lands, Housing and Arid Areas Development, Malawi	April 2015
Stuart Chidothe Tasosa	Ministry of Lands and Housing, Malawi	April 2015
Hon. Paul Chibingu	Minister of Lands, Housing and Urban Development, Malawi	April 2015
Dr. Purles M. Ligoya	Malawi High Commissioner, Malawi	April 2015
Hon. Dr. Rachael Nyamai	Member of Parliament, Kitui South, Kenya	May 2015
Samuel Akera	Program Specialist, UNDP RSC/IGAD, Kenya	May 2015
Fred Uduir	Deputy Chair, LSK, Kenya	May 2015
Moses Kiambuthi	CEO, ISK, Kenya	May 2015
Dorcas Omukhulu	TVET Authority, Kenya	September 2015
Kipkemoi Samuel Langat	TVET Authority, Kenya	September 2015
George Odera	TVET Authority, Kenya	September 2015
Arch Mariamu El-maawy	Principal Secretary, Ministry of Land, Housing and Urban Development, Kenya	October 2015
Leon Ntongo Lumuka	Secretary General, Ministry of Foreign Affairs, DR Congo	October 2015
Clarissa Augustinus	Global Tool Network, UNHABITAT	October 2015
Dr. Muhama Ouedraogo	Head of Science and Technology, African Union	October 2015
Mr. Sibonso Nkambuk	Acting Principal Secretary, Ministry of Natural Resources and Energy, Swaziland	October 2015
Dr. Fred Matiang'i	Minister, Ministry of Land, Housing & Urban Development, Kenya	November 2015

# Pictorial



RCMRD Technical  
Committee  
Touring Survey of  
Kenya Offices

Training in  
Botswana on Web  
Mapping



Spatial Data  
Infrastructure  
Workshop in  
Zambia

# Pictorial

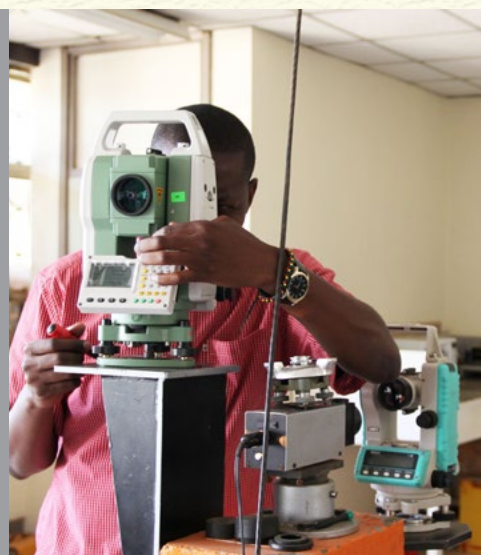


Spatial Data  
Infrastructure  
Workshop in  
Rwanda

Land Cover  
Mapping Training  
in Lesotho



Staff Staff  
Repairing and  
Servicing Survey  
Instruments at  
RCMRD Workshop





The Director General,  
Regional Centre for Mapping of Resources for Development  
Kasarani Road, Off Thika Road  
P.O. Box 632-00618,  
Ruaraka, Nairobi, Kenya  
Tel: +254 20 2680722/2680748  
Fax: +254 20 2680747  
Email: [rcmrd@rcmrd.org](mailto:rcmrd@rcmrd.org)  
Website: <http://www.rcmrd.org>