



Ecosystem Management and Natural Resource Monitoring

RCMRD has dedicated its efforts to building the capacity of member State's governments and private sector institutions to work with EO data and geospatial technologies to derive tools and information necessary for environment planning, and natural resource monitoring and assessment.

We also play a vital role in biodiversity and ecosystem management by acting as a hub for scientific research, innovation, and technology. We focus on safeguarding Eastern and Southern African ecosystems with evidence-based, data-driven decision-making through advanced geospatial technologies.

RCMRD hosts the Regional Centre of Excellence (RCoE) for Biodiversity, Forests and Seascape Ecosystems Management, which collaborates with biodiversity conservation actors in various sectors ranging from governments, environmental agencies, and NGO's to enhance the protection and sustainable use of forests, biodiversity, and seascape ecosystems

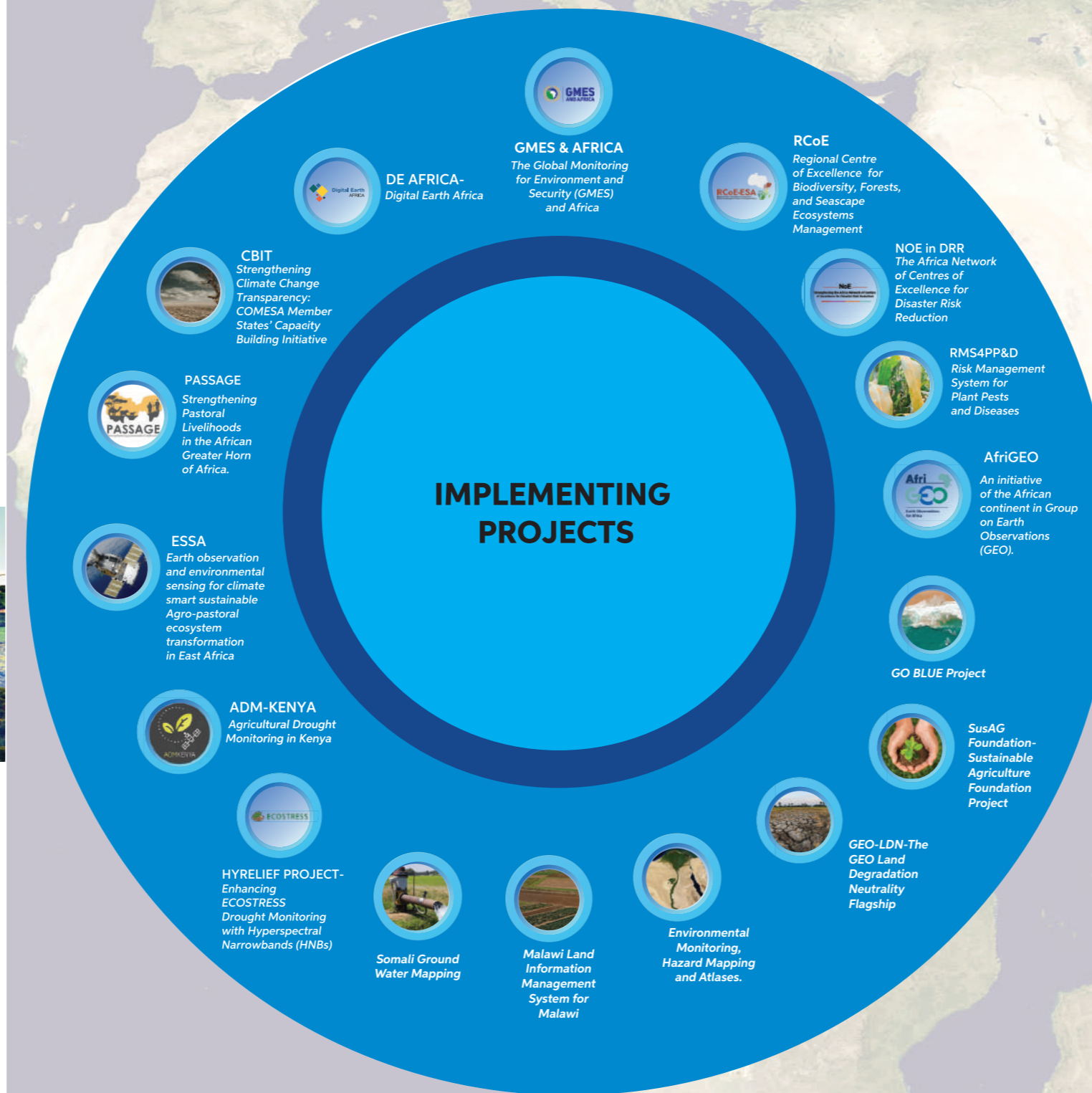


Climate Change And Disaster Risk Reduction

We provide geospatial tools and data for weather forecasting and water resource monitoring, enabling real-time data collection and analysis for effective flood risk management. The focus is on understanding weather patterns, monitoring climate variability, and assessing the effects of climate change on ecosystems, agriculture, and water resources.

Our work supports decision-makers in implementing sustainable development initiatives, disaster risk reduction, and resource management across member States, addressing the increasing challenges posed by changing climate conditions.

One of our initiatives under this thematic is supporting Community-Based Flood Early Warning Systems (CBFEWS) in Malawi. By enhancing early warning systems, RCMRD helps local communities and authorities to anticipate and respond to flood events, thereby reducing vulnerabilities and improving disaster preparedness in flood-prone areas.



Regional Centre for Mapping of Resources for Development



RCMRD Profile

Mapping for Sustainable Development

Kasarani Road, Off Thika Road
P.O. Box 632 - 00618 Nairobi, Kenya
Tel: +254 735 981 098/+254723786161
Fax: +254 20 2680747

Email: rcmrdr@rcmrdr.org
Website: www.rcmrdr.org

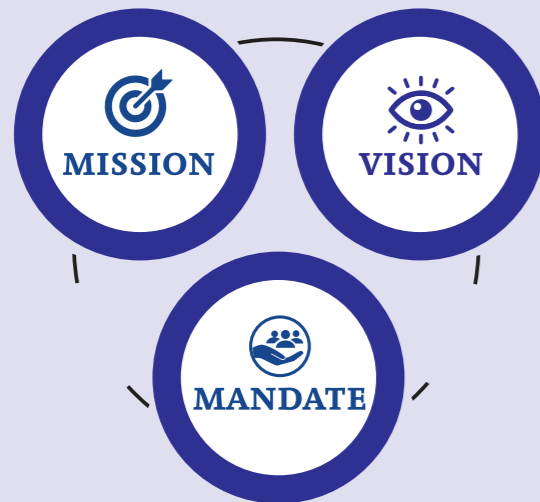
ABOUT RCMRD

The Regional Centre for Mapping of Resources for Development (RCMRD) was established in Nairobi – Kenya in 1975 under the auspices of the United Nations Economic Commission for Africa (UNECA) and the then Organization of African Unity (OAU), today African Union (AU). RCMRD is an inter-governmental organization and currently has 20 Contracting member States in Eastern and Southern Africa Regions

Member States



To strengthen the member States and our Stakeholders capacity through Generation, Application and Dissemination of Geo-Information on and Allied Technologies for sustainable development.



To be a Premier Centre of Excellence in the provision of geo-information and allied technologies for Sustainable Development in the member States and other Stakeholders.

To provide capacity building; advisory services; implement programs; and undertake Research & Development of innovative solutions and services on geo-information and allied technologies to member States and other Stakeholders

OUR SERVICES

Dissemination of Geospatial Data

RCMRD partners with global data providers such as MAXAR to offer high-resolution datasets (down to 30cm) at subsidized rates to member states. These partnerships allow RCMRD to serve as a data reseller, supplying vital information to relevant institutions, organizations and ministries. Data acquisition occurs from multiple sources and in different resolutions: High-Resolution Data(Maxar, 0.5m), Medium Resolution(10-30m, Sentinel, Landsat), and Low Resolution (MODIS, VIIRS). RCMRD data centre is responsible for Data Management and Archiving for all historical and acquired data, including commercial and open-source datasets, Data Dissemination and archiving.

Servicing and Calibration of Mapping Equipment

The RCMRD engineering section conducts calibration, servicing, repair, and upgrading of member states and private sector surveying and mapping instruments. The center is authorized by major manufacturers like Leica, Trimble, and Geomax, training technicians using the latest technology and professional tools. The service includes maintenance, upgrade, repair, certification, training, safety and environment polices

Advisory Services

RCMRD provides advisory services on geospatial information and resource management for sustainable development in Africa. They assist governments, private sector entities, and organizations in leveraging data for strategic decision-making, including environmental monitoring, land use planning, and disaster risk management. RCMRD also supports policy formulation, promoting sustainability and resilience, and fostering collaboration among African countries to tackle cross-border challenges like deforestation, water management, and food security.

Capacity Development & Training

RCMRD focuses on Capacity Development & Training in geospatial technologies to equip individuals and institutions in key areas like land management, climate resilience, disaster risk reduction, and sustainable development. The organization offers corporate and professional short courses in practical applications like Earth Observation, GIS, Remote sensing, surveying, mapping, environmental management, and ICT. Through the Regional Centre Training Institute (RCTI) section, RCMRD offers long-term courses in geospatial and ICT fields, including land surveying, cartography, GIS, photogrammetry and ICT.

Land surveying and Mapping

RCMRD offers the full suite of land surveying services (Geodetic surveys, Topographical surveys, Engineering surveys, Hydrographic surveys, Cadastral surveying, and control surveying) using state-of-the-art equipment and software. We also offer training in professional short courses such as Global Navigation Satellite Systems (GNSS), African Geodetic Reference Frame (AFREF), Continously Operating Reference Systems (CORS), Land information Management Systems, and tailor-made courses among others. RCMRD supports Fit-For-Purpose (FFP) Land Administration /Management in areas such as Land Reforms, Land Registration, and Land Process Automation in member States.

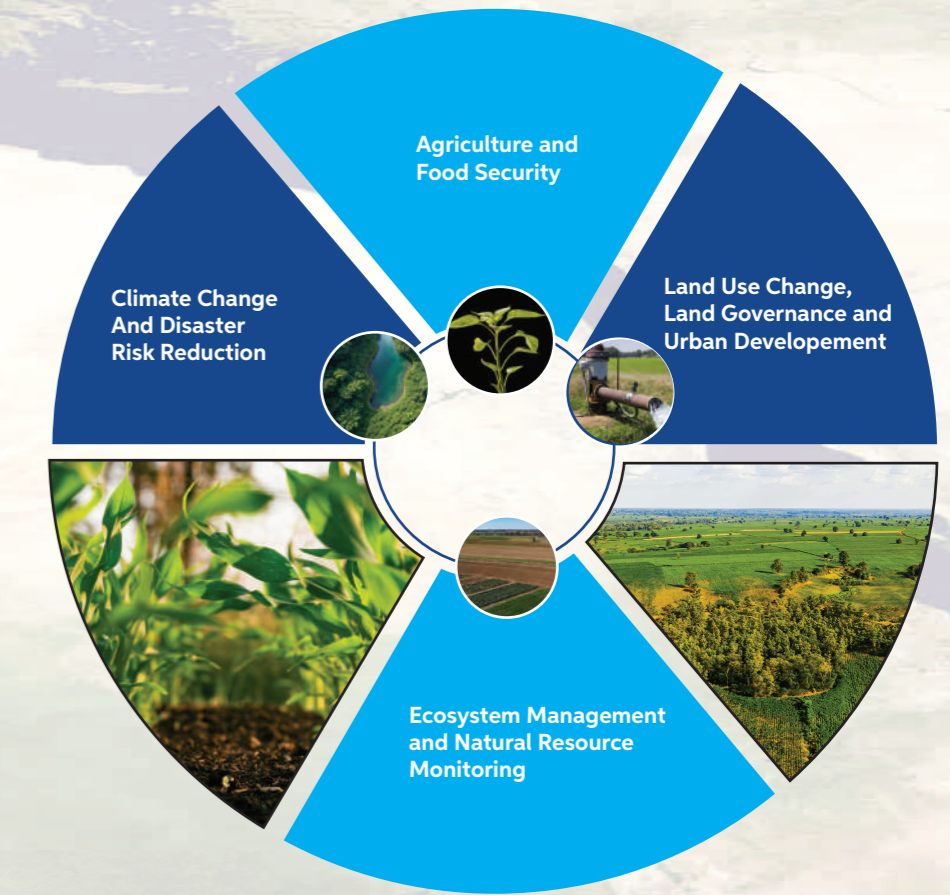
Research and development

As a research-based institution, RCMRD supports efforts in Earth Observation (EO), fostering innovation and incubating ideas. Through its GEO Hub, the center serves as a platform for incubating and supporting young researchers in the GEO domain, offering them opportunities to explore, develop, and refine their innovations. This focus on research and innovation positions RCMRD as a crucial enabler of technological advancements, particularly in EO and related fields' while strengthening the capacity of young talent across the region.

Project Implementation

We implement projects leveraging geospatial technologies and Earth observation to support sustainable development and improve resource management across Africa. Through partnerships with governments, international organizations, and development agencies in these projects, RCMRD addresses the following thematic areas;

KEY THEMATIC AREAS



Agriculture and food security

RCMRD utilizes geospatial technologies and EO to enhance agricultural productivity, food security, and sustainable land management, focusing on mapping of agricultural resources, monitoring crop health, and providing data for better decision-making in farming practices. This thematic area also emphasizes land use planning, climate-smart agriculture, and early warning systems for food-related challenges, helping governments and stakeholders optimize resources, enhance food production, and adapt to environmental changes.



Land Use Change, Land Governance and Urban Development

RCMRD is dedicated to enhancing sustainable land governance across Africa through technology-driven solutions. We offer surveying, mapping, and Land information Management Systems and also supports the African Geodetic Reference Frame (AFREF) project, promoting accurate mapping and spatial data integration. Our services empower governments, communities, and institutions to achieve secure land tenure and responsible land use.

